

CPNRD GIS INTERNET APPLICATION:

Instructions & Overview

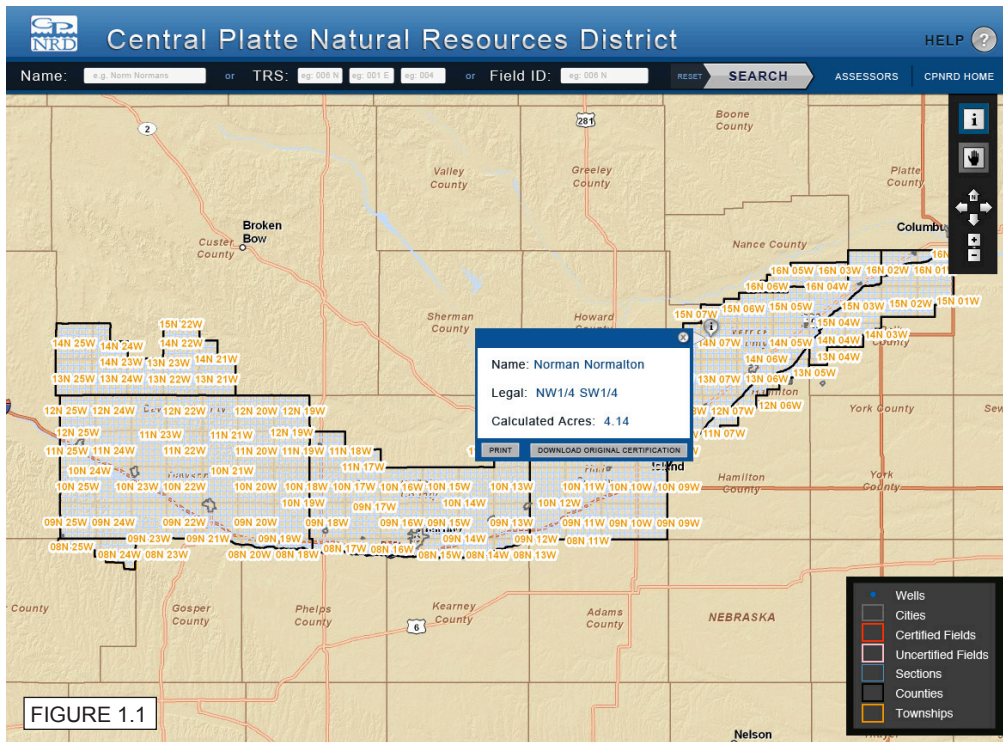


FIGURE 1.1

Search

- The main application window (figure 1.1) provides the ability to search three different attribute fields: Name, TRS, and Field ID. You may only search one attribute at a time. Once an attribute field is selected, you will have to click the “Reset” button (explained below) to re-enable the other attribute fields. To perform a search, click the “Search” button (figure 1.2).

FIGURE 1.2

SEARCH

- Name Search: To search for a name, click in the text box next to the “Name” label (figure 1.3). Type in the name you want to search for, and click the “Search” button (figure 1.2).

FIGURE 1.3

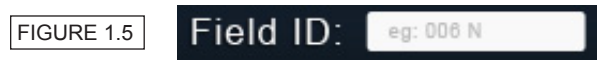
Name: e.g. Norm Normans

- Legal Search: To search for a legal boundary, click in the text box next to the “TRS” label (figure 1.4). In the first text box, enter the township number using one or two digits, click in the second text box and enter the range identifier using one or two digits and a single letter to indicate direction, click in the third text box and enter the section number using one or two digits, then click the “Search” button (figure 1.2).

FIGURE 1.4

TRS: eg: 006 N eg: 001 E eg: 004

- Field ID Search: To search for an irrigation field, click in the text box next to the “Field ID” label (figure 1.5). Enter the irrigation field ID you want to search for, and click the “Search” button (figure 1.2).



- Reset: The reset button is used to change the type of search after an attribute field is selected, click the “Reset” button (figure 1.6) to re-enable all three attribute fields.



Help

- The “Help” button (figure 1.7) will open a tabbed window (figure 1.8) containing a current version of this help PDF, an FAQ section, and contact information.

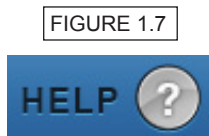


FIGURE 1.8



Map Navigation & Control

- The Map Navigation Toolbar (figure 1.9) contains four tools which will allow you to navigate the map. It includes the “Pan” tool (figure 1.11), the “Identify” tool (figure 1.14), the “Pan Arrow” tool (figure 1.10), and the “Zoom” tool (figure 1.20). The “Pan” tool has a blue outline when selected (figure 1.15) and a gray outline when un-selected (figure 1.14) in the Map Navigation Toolbar.
- There are two options to pan around the map. Option 1: click the “Pan Arrow” buttons to move the map north, east, south, or west. Option 2: click the “Pan Cursor” tool and then move the map by clicking and dragging it with your mouse.



FIGURE 1.10



FIGURE 1.9



- To identify a feature on the map, click the “Identify” button (figure 1.14) then click on the map. A pop-up window (figure 1.19) will display the Name of the owner, the Legal Description, and the Calculated Acres. This tool has a blue outline when selected (figure 1.15) and a gray outline when un-selected (figure 1.14) in the Map Navigation Toolbar.



If a field is identified, you may print the map by clicking the “Print” button (figure 1.16) or download the original certification document by clicking the “Download Original Certification” button (figure 1.17). To close the identification results window, click the “X” button (figure 1.18).

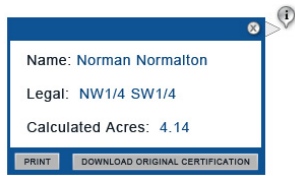


FIGURE 1.16



FIGURE 1.17



FIGURE 1.18



FIGURE 1.19

- To zoom in or out, you may click the “+” or “-” buttons (figure 1.20) or scroll your mouse wheel.

FIGURE 1.20



Assessors

- To see a list of assessors associated with CPNRD, click the “Assessors” link in the upper right hand side of the application.

CPNRD Website

- For quick access to our public website, we have included a main “CPNRD Home” link in the upper right side of the application. Click the “CPNRD Home” link at any time and it will open in a new browser window without interrupting any work you have done within the application.